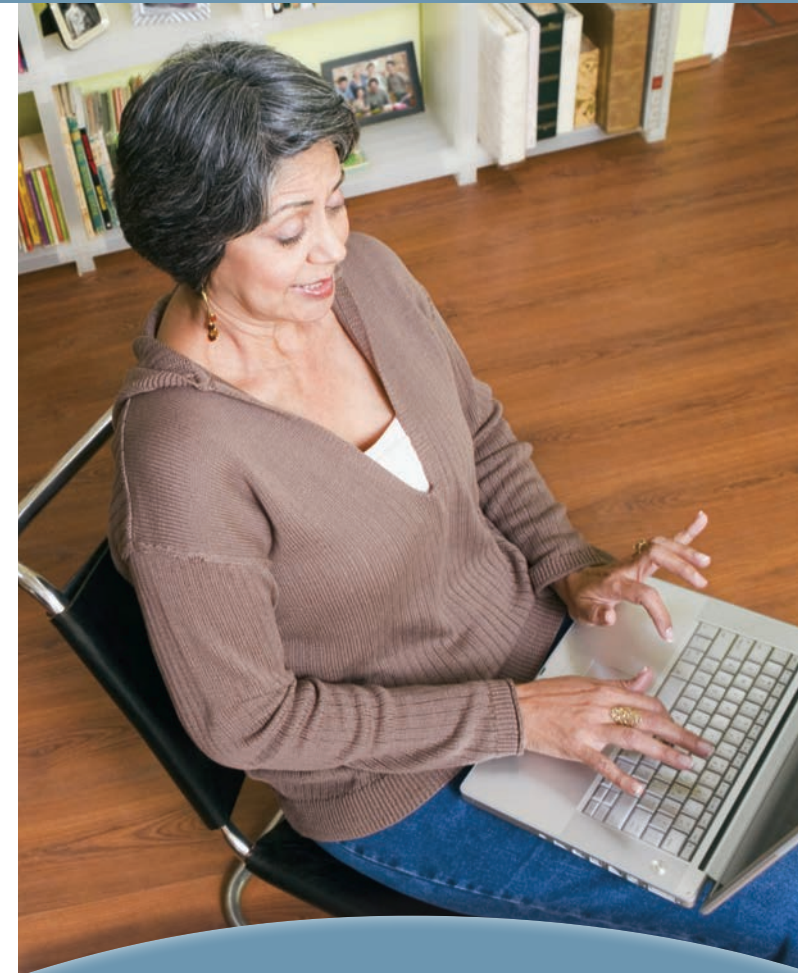


With YRMC CareConnect, Your Medical Record is Safe and Secure

YRMC CareConnect is powered by Cerner Health, an Electronic Medical Record (EMR) that enables you to securely collect, manage and share your health information. Cerner Health has been developing electronic medical records and secure technology applications for healthcare organizations since 1979.

YRMC CareConnect is compliant with the Health Insurance Portability and Accountability Act (HIPAA), maintains the highest level of confidentiality and provides you with the ability to securely view, store and share your medical record.

YRMC CareConnect is provided for your convenience, free-of-charge, 24 hours a day, seven days a week. However, if you are not comfortable using the Internet to access your medical record on-line, you can still obtain copies of your medical record by contacting the YRMC PhysicianCare medical clinic where you receive care, or by contacting the YRMC Health Information Management Department.



YRMC CareConnect

*A convenient and secure portal
to your confidential health information
anytime, from anywhere.*



YAVAPAI REGIONAL
MEDICAL CENTER

Proudly Caring for Western Yavapai County

MAIN SWITCHBOARD

(928)445-2700

www.yrmc.org

YRMC
CareConnect

YRMC
CareConnect

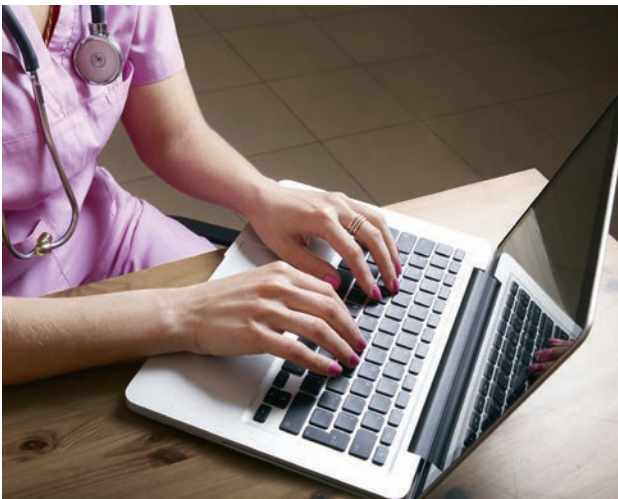
Welcome to



Your Electronic Medical Record is an important part of 21st century medicine. By combining the personal touch of our caregivers with sophisticated, secure information technology, we are redefining how patient care is delivered and how your health information is used.

When you visit your primary or specialty care provider at a YRMC PhysicianCare medical clinic, or receive care at Yavapai Regional Medical Center or other YRMC outpatient centers, your medications, allergies, laboratory results, imaging studies, and visit summary documents are being updated on your medical record.

Your YRMC healthcare team has access to this important information, and with YRMC CareConnect, you have access to much of the same information – anytime, anywhere you have an Internet connection.



Powerful Health Information at Your Fingertips

To make informed healthcare decisions, you want access to the same high-quality healthcare information that your healthcare providers have. With YRMC CareConnect, you can:

- Receive reminders about important healthcare items;
- Access your medical record, such as procedures, scans, imaging reports, immunizations, medications and allergies;
- Review care summary and discharge documents;
- Download elements of your medical record to easily share with other providers.

With YRMC CareConnect, you also can:

- Request an appointment with a primary or specialty care provider at a YRMC PhysicianCare medical clinic;
- Send a message to your primary or specialty care provider at a YRMC PhysicianCare medical clinic;
- Check on upcoming appointments.

How Do I Enroll for a YRMC CareConnect account?

When you visit a provider at a YRMC PhysicianCare medical clinic, or register for care at Yavapai Regional Medical Center, you will be asked four simple questions:

1. Are you interested in enrolling in YRMC CareConnect?
2. What is your e-mail address?
3. What security question would you like to use?
4. What is the answer to your security question?

After the steps above have been completed, an invitation will be sent to the e-mail address you provide. This invitation will include a link to a secure log-in page with additional instructions to help you create your account.

We encourage you to open the e-mail invitation and complete the account enrollment process as soon as possible.

Parents and legal guardians can also enroll to create accounts in YRMC CareConnect for each child up to 12 years of age. When the child reaches 12 years of age, the account will be discontinued.

If at any time you require technical assistance for YRMC CareConnect, please call (877) 621-8014.

Please note that some older Internet browsers may not function properly with YRMC CareConnect. If you do experience compatibility issues, you may need to upgrade your browser.

What if I Forget My Password?

Resetting your password is simple.

Just visit the log-in page for YRMC CareConnect and select the link "Forgot Your Password." Then follow the instructions to reset your password. If you continue to have trouble logging on to the site, call (877) 621-8014 for assistance.

You can access the log-in page for YRMC CareConnect from the YRMC PhysicianCare medical clinics page at www.yrmcpc.org or via the YRMC Health Information Management page at www.YRMCCareConnect.org.