

YRMC Foundation Restricted Funds



Advanced Wound Care Fund (4283)

Donations held in the Advanced Wound Care Fund are used to provide community outreach and education, professional staff education and training, and equipment purchases, as well as essential health supports for patients who do not qualify for other programs and community services.



BreastCare Center Fund (4205)

Donations provide diagnostic and treatment services and essential health support for patients who do not qualify for other programs and community services. Funds also help promote community breast health awareness and education, purchase new technology, and provide staff education and training.



Clothing Closet Fund (4212)

Donations held in the Clothing Closet Fund are used to provide clothing and other necessary essentials through the Clothing Closet program to ensure patients transitioned from YRMC are discharged with dignity.



Community Care Fund (4217)

Funds raised are used to provide essential healthcare services, supplies, and the basic resources necessary to protect and advance the health of those in our community who are less fortunate and at risk.



Diabetes Program Fund (4260)

Donations held in the Diabetes Program Fund are used to provide community outreach and education, essential health supports for patients who do not qualify for other diabetes management programs and community services, as well as professional staff education and training.



Employee Emergency Fund (4220)

Donations held in the Employee Emergency Fund are used to provide temporary financial assistance to YRMC employees who have experienced a sudden, catastrophic, life-altering event.



Family Birthing Center Fund (4250)

Donations held in the Family Birthing Center Fund are used to purchase supplies, capital equipment, community outreach and education, and professional staff education and training. This fund also supports patients with financial issues prohibiting them from providing the most basic needs of a new baby.



Family Resource Center Fund (4225)

Donations to the Family Resource Center (FRC) Fund are used to provide support to families served by the FRC to build parenting and coping skills, as well as community outreach and education to expand awareness about FRC programs and their impact.

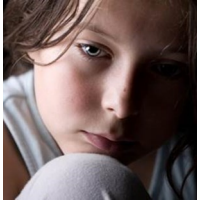
(over)

(continued)



General Fund (4227)

Donations to the General Fund are used to provide support for core operational and administrative functions and tasks at Yavapai Regional Medical Center.



J. H. Stenger Fund (4242)

The J. H. Stenger Fund's primary focus is funding programs that provide behavioral health services to underserved children, adolescents, and older adults. The Fund will also support community outreach and education initiatives that fight the negative stigma surrounding mental health, professional staff education and training, improving access to behavioral health services, and preventive care initiatives in our communities.



James Family Heart Center Fund (4240)

Donations held in The James Family Heart Center Fund may be used for the purchase of patient care equipment and technology, staff education and training, community outreach and education, and renovations to improve patient and visitor comfort.



Nursing Education Fund (4247)

Donations to the Nursing Education Fund help ensure YRMC's nursing staff receive training to continue to meet our diverse and evolving patient needs, maintain their legacy of high quality and compassionate care, and provide comfort to our patients and their families.



Palliative Care Fund (4258)

Funds held in the Palliative Care Fund are intended to help improve the quality of life for those with serious and life-limiting illnesses and their families. Donations to the fund may be used for community outreach and education, caregiver resources, essential health supports for patients that do not qualify for other services, and professional staff education or training.



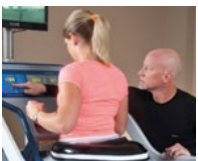
Partners for Healthy Students Fund (4255)

PHS provides health care services at no cost to underserved children throughout YRMC's service area. Donations support operating expenses including equipment and supplies purchase, community outreach and education, professional staff education and training, and vehicle replacement and maintenance.



Pendleton Center Fund (4262)

Donations held in the Pendleton Center Fund are used to provide community outreach and education, professional staff education and training, equipment purchases, and participant scholarships.



Physical Rehabilitation Fund (4245)

Donations held in the Physical Rehabilitation Fund are used to provide community outreach and education, support rehabilitation services by our licensed physical, occupational, speech and massage therapists, provide professional staff education and training, and fund equipment purchases.



Volunteer Department Fund (4271)

Donations held in the Volunteer Department Fund may be used to support the department's humor therapy program, music program, PAWS (Pets are Warm Support), chaplain services, patient and visitor courtesy cart, staff development/education, and general program support.